

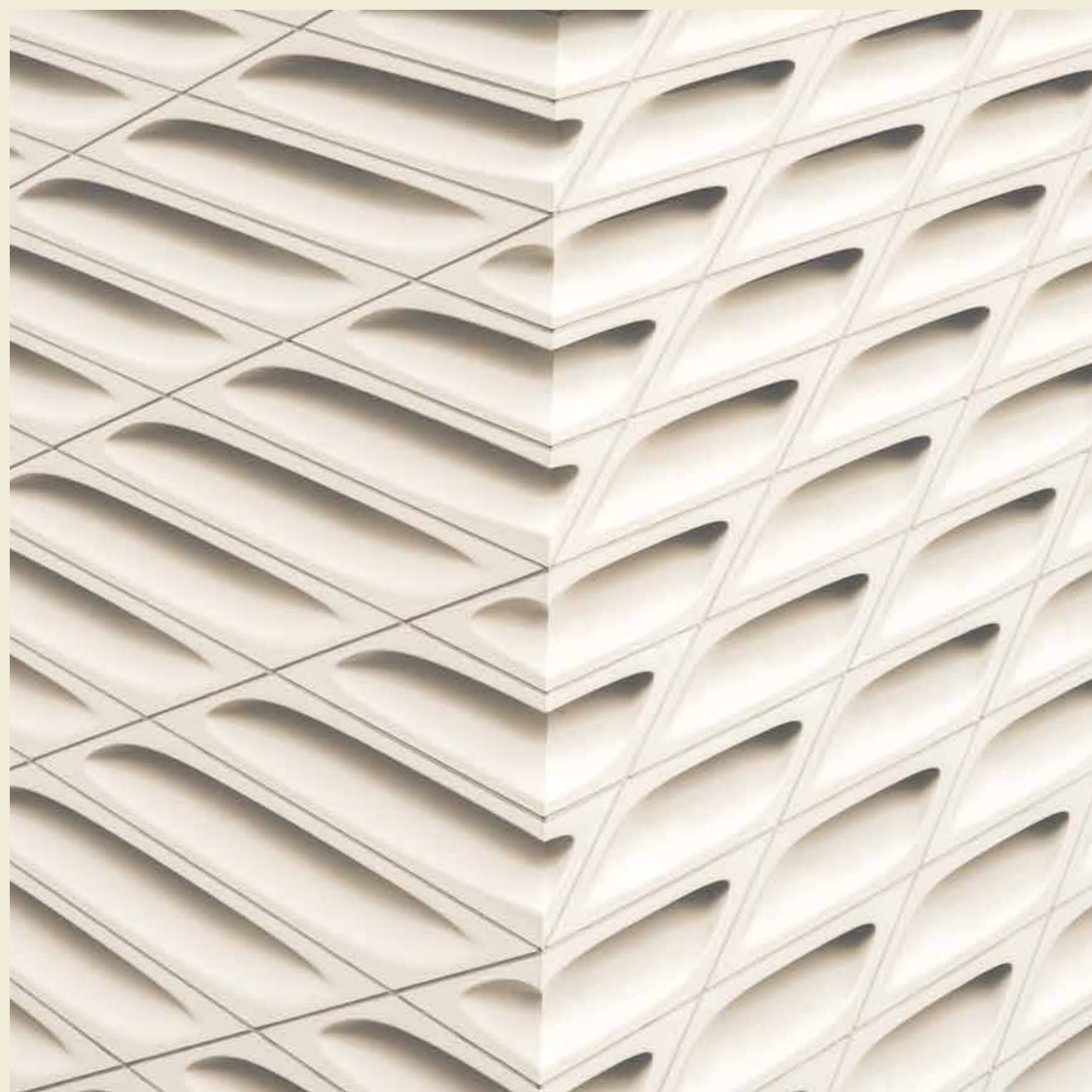
FINSQUARE

BOUTIQUE WORKPLACE

15923



FINSQUARE
BOUTIQUE WORKPLACE



We believe there are no limits to excellence and innovation. Year after year, we take huge leaps to leave a significant mark in the market and anchor our positioning as Egypt's upcoming leading Group.

We're on a mission to make a real difference in the Egyptian Market with a diversified expertise and deep knowledge of what we do. With a vision to develop inspiring communities & strong roots of construction development that bring people together, we started our 40th year by adopting new strategies that are built on the futuristic needs of our clients and Market needs, without compromising on quality or value.

Our guiding principles and values honor our commitments and are at the core of every community we construct & develop and every product & service that we provide.

Throughout our 40-year journey, we've been delivering Roads, Bridges, Homes, Building Technologies, Airports, Ports, and Communities for generations of the past, present, and future. During those years, we've proudly brought together diverse projects & communities across Egypt.

EL SHENNAWY GROUP bounds to deliver & construct the walls of homes, retail shops, buildings, roads, etc... that thrive in a harmonious balance that represents the past, present, and future intertwined.



SINCE 1980



SINCE 1992



SINCE 2015



SINCE 2022



Our latest expansion using our 40 years of experience Est. in 2022, to develop "FINSQUARE" - A Boutique Workplace.

Our project was launched in a vibrant location, NAC, offering purely administrative units with competitive facilities & amenities, which makes it a unique investment opportunity.

During the unprecedented development and construction we made this unique piece of art that we are witnessing.

FINSQUARE is an office building with an iconic address. Perfectly situated in the Financial District, positioned at the tip of the land in an L-shaped structure with a total built up area of 12,500 SQM giving it larger facade and a warmer outdoor breakout area to grant open views to most units while embracing a considerably spacious landscaped social yard. It is a focal point where you will never be short of what you need.





FINSQUARE

BOUTIQUE WORKPLACE



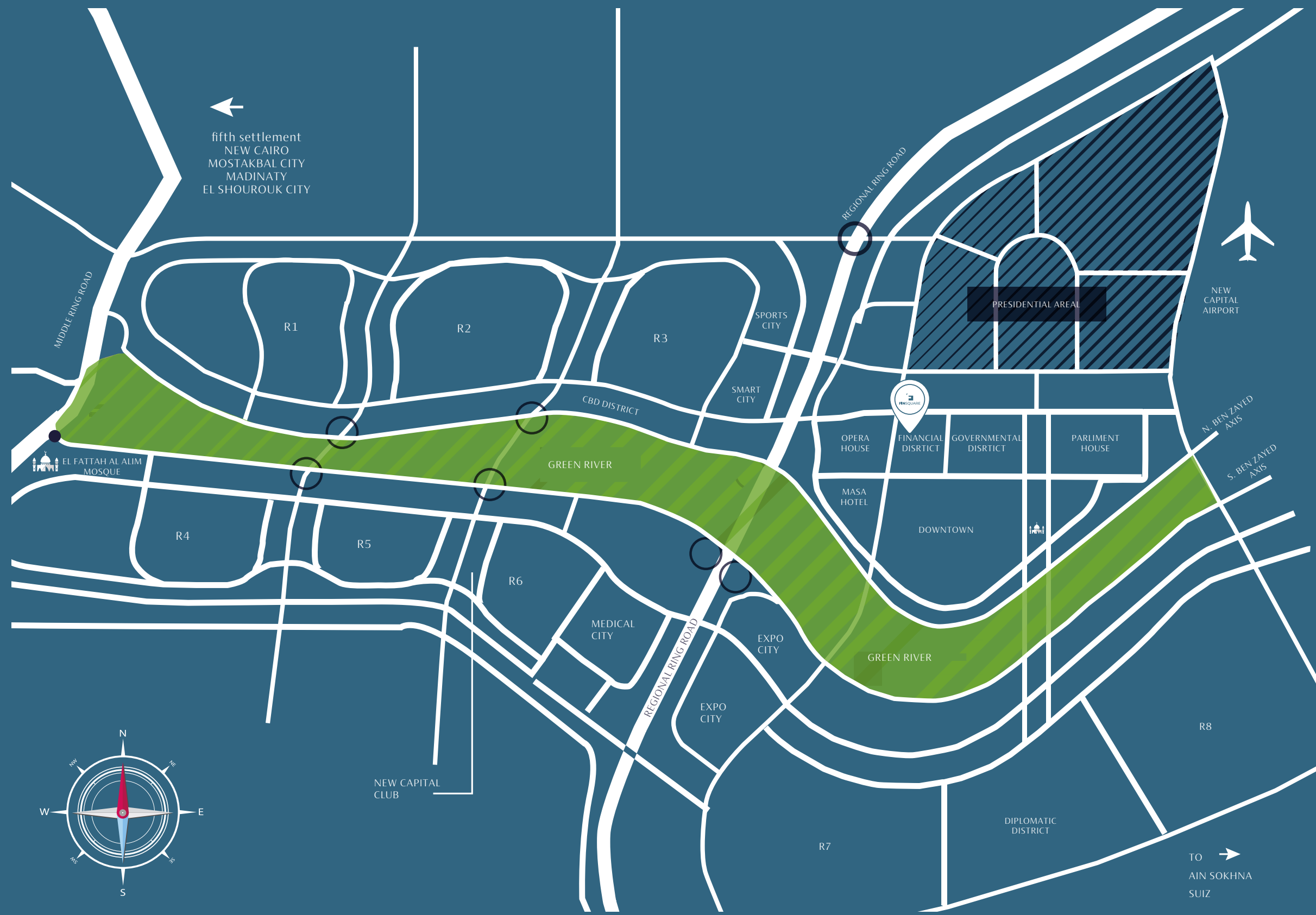
THE NEW ADMINISTRATIVE CAPITAL

The New Administrative Capital project was launched during the World Sustainability Development Summit in March 2015 to within the framework of the strategic future development plan and vision Egypt 2030; as an essential part of the urban expansion program to keep pace with the expected population increase by building fourth generation cities, providing the best services to the Egyptian citizens, and launching a different real estate product in many residential, commercial, administrative and entertainment projects at varying prices to attract investors and consumers alike. The master plan aims on developing a dynamic sustainable area by integrating between land utilisation, public transport accessibility, modern road systems that simulate environmental conditions, and contemporary ways of living.



THE FINANCIAL DISTRICT

The Financial District is specifically unique in a vital and pivotal way as it features the most important landmarks, finance and banking organizations, governmental administration entities, the presidential headquarters, the parliament, all ministries, the stock market, educational institutes, the new opera house, several commercial properties, and an international airport.



BOUTIQUE WORKPLACE

**A RETREAT WHERE
YOU CAN FLOURISH,
GROW, STRENGTHEN
AND RECHARGE.**





FINSQUARE

In recent years forward-thinking businesses realized the many benefits there are in changing property practices and moved towards a more flexible approach and efficient working methods when choosing corporate space.

Modern efficient workspaces that can accommodate a core team and visiting members have become significantly appealing and increasingly in demand unlike the classic city center headquarters with intimidating architecture.

This is exactly why **EL SHENAWY DEVELOPMENT** developed **FINSQUARE** as an optimum solution for businesses; designed and planned to boost work/life balance with greater gains on productivity and staff retention.



THE ONE INVESTMENT, THAT *NOURISHES* ALL

FINSQUARE is an office building with an iconic address. Crafted with the end in mind, featuring a modern contemporary design with a characteristic façade and stylish interior.

FINSQUARE encompasses a range of offices, meeting rooms and break-out areas to work, meet, share ideas, network, and progress. With the right location, design, and timing, it comprises the right elements to make it a solid investment property with a satisfactory rate of return to suit all your business needs.





FINSQUARE
BUSINESS COMPLEX



INTRODUCING THE PODS; OUR GIFT TO YOU AND OUR ESSENCE OF PERFECTING CONVENIENCE.

For the first time in the Financial District; **EL SHEN-NAWY DEVELOPMENT** introduces a unique workplace experience; THE PODS, 2 story office space units with private entrances; enabling you to further indulge with more privacy, accessibility and elevation.









SEAMLESS SUCCESS

MADE EASY

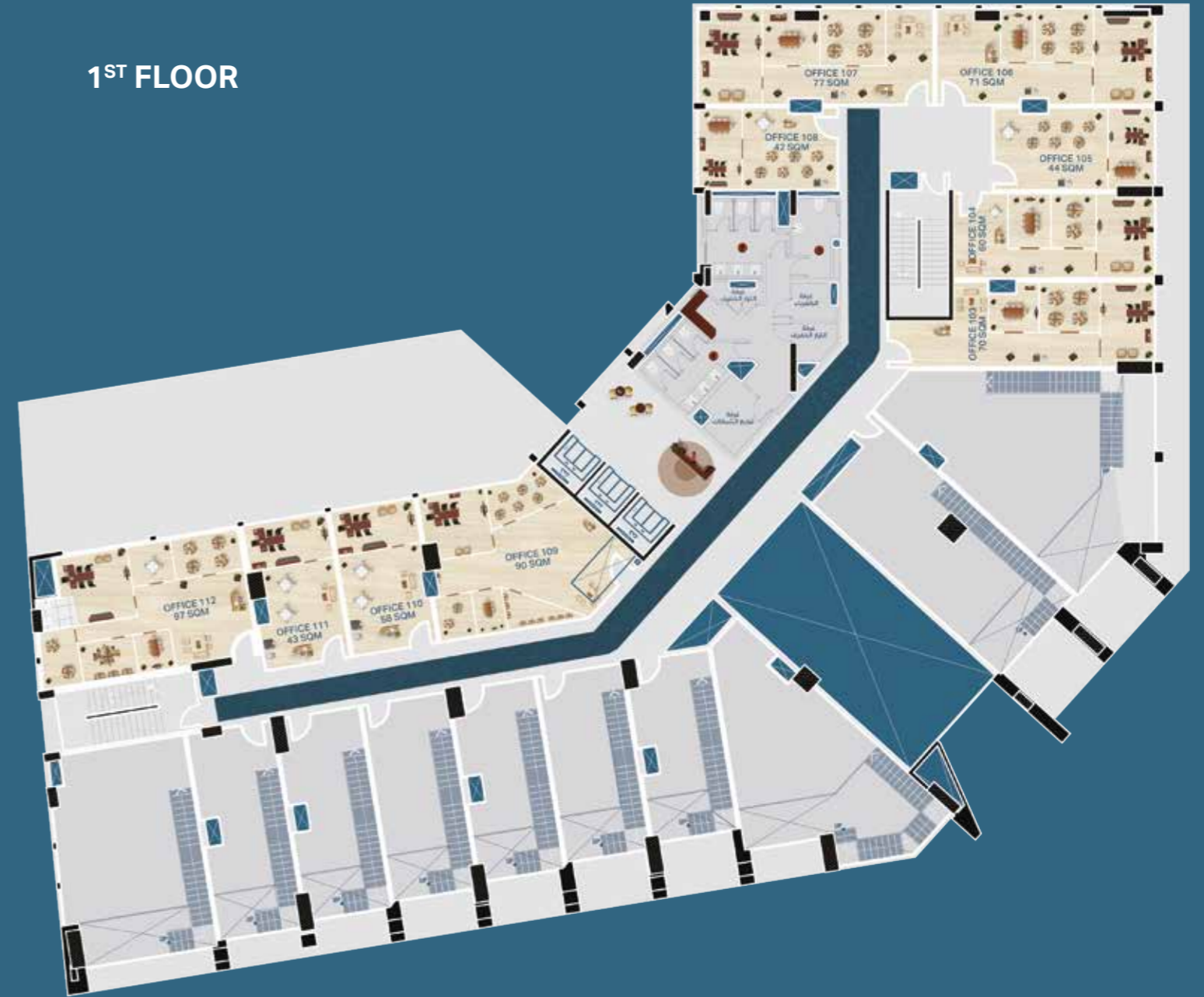




GROUND FLOOR

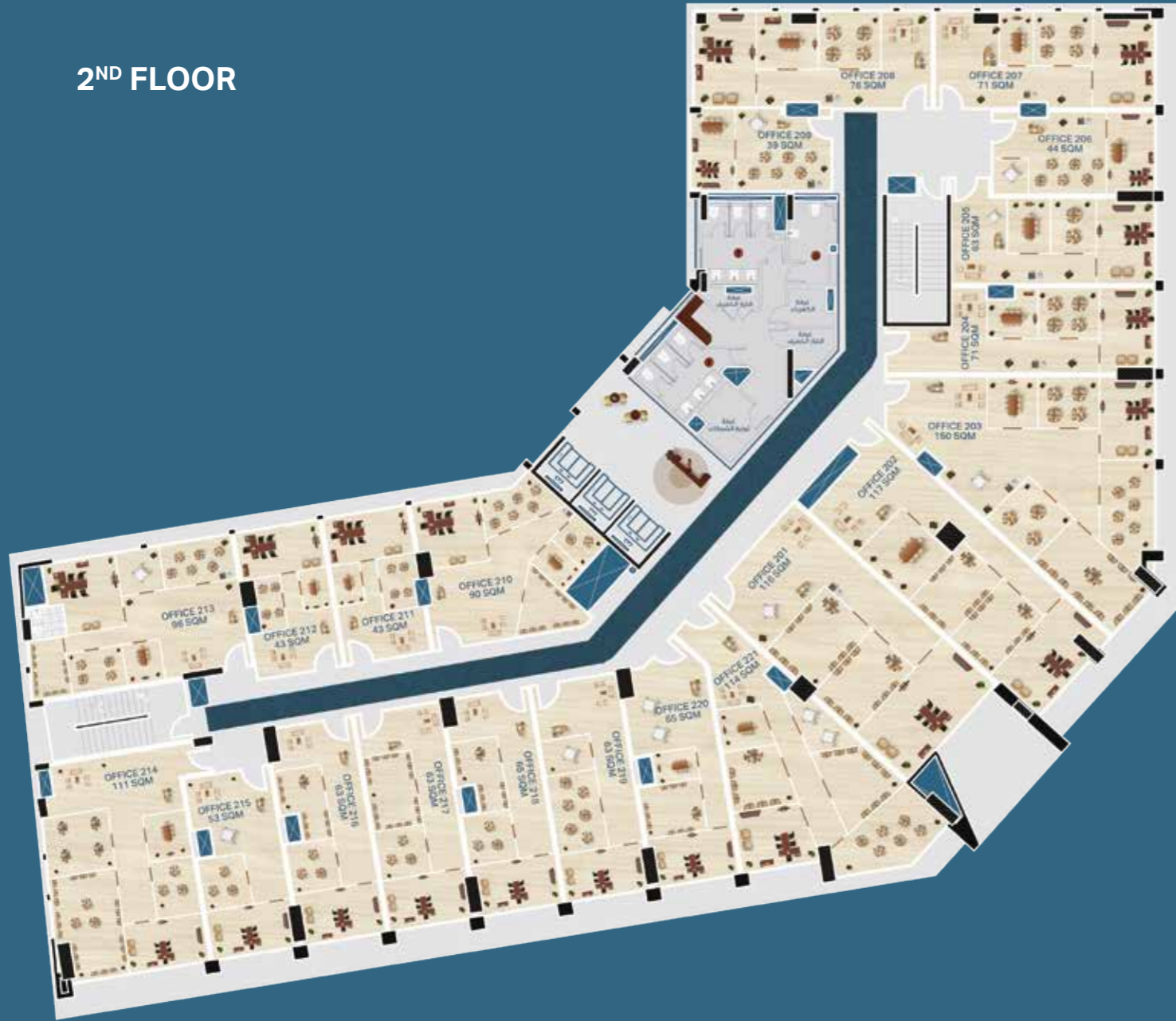


1ST FLOOR

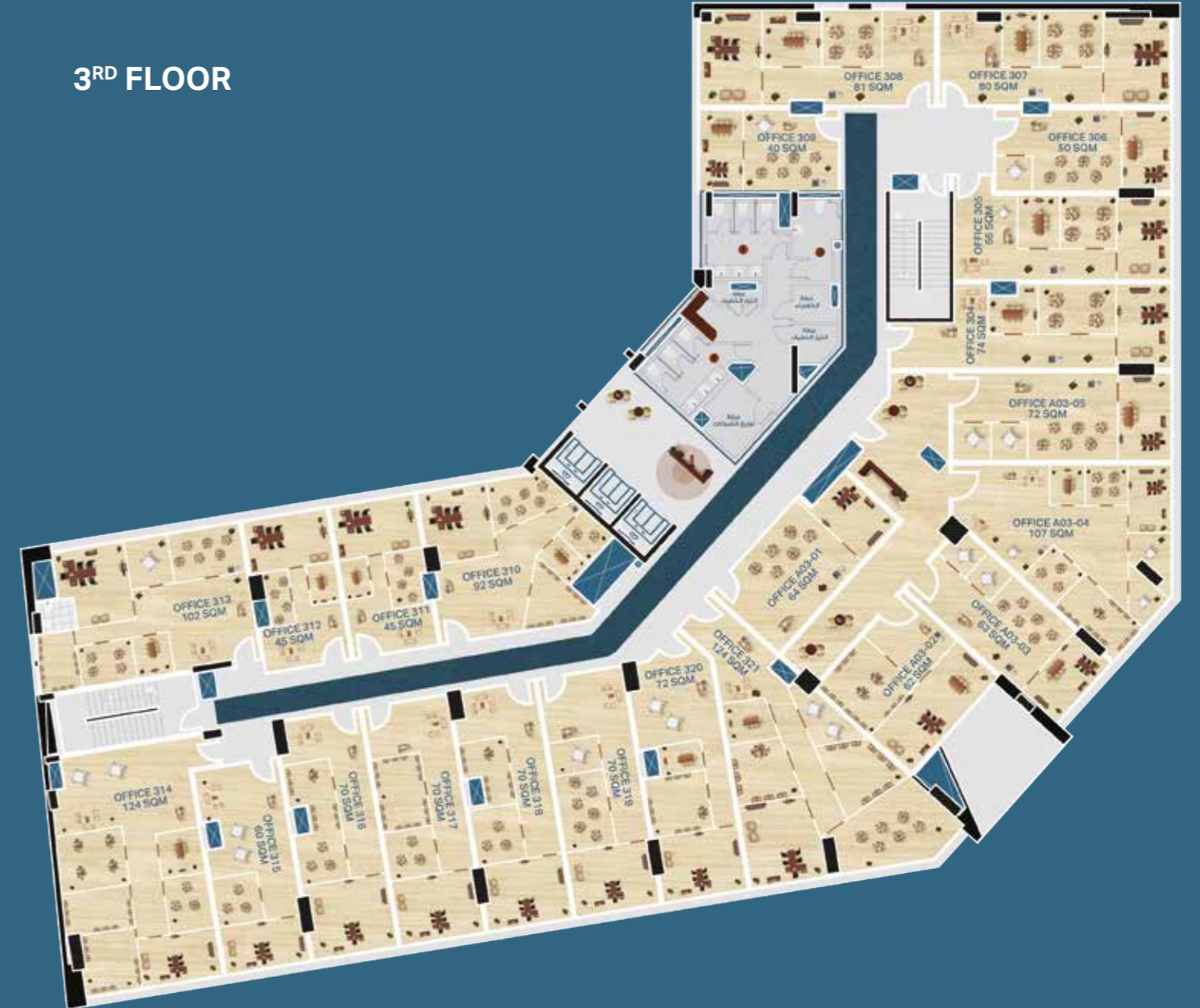




2ND FLOOR

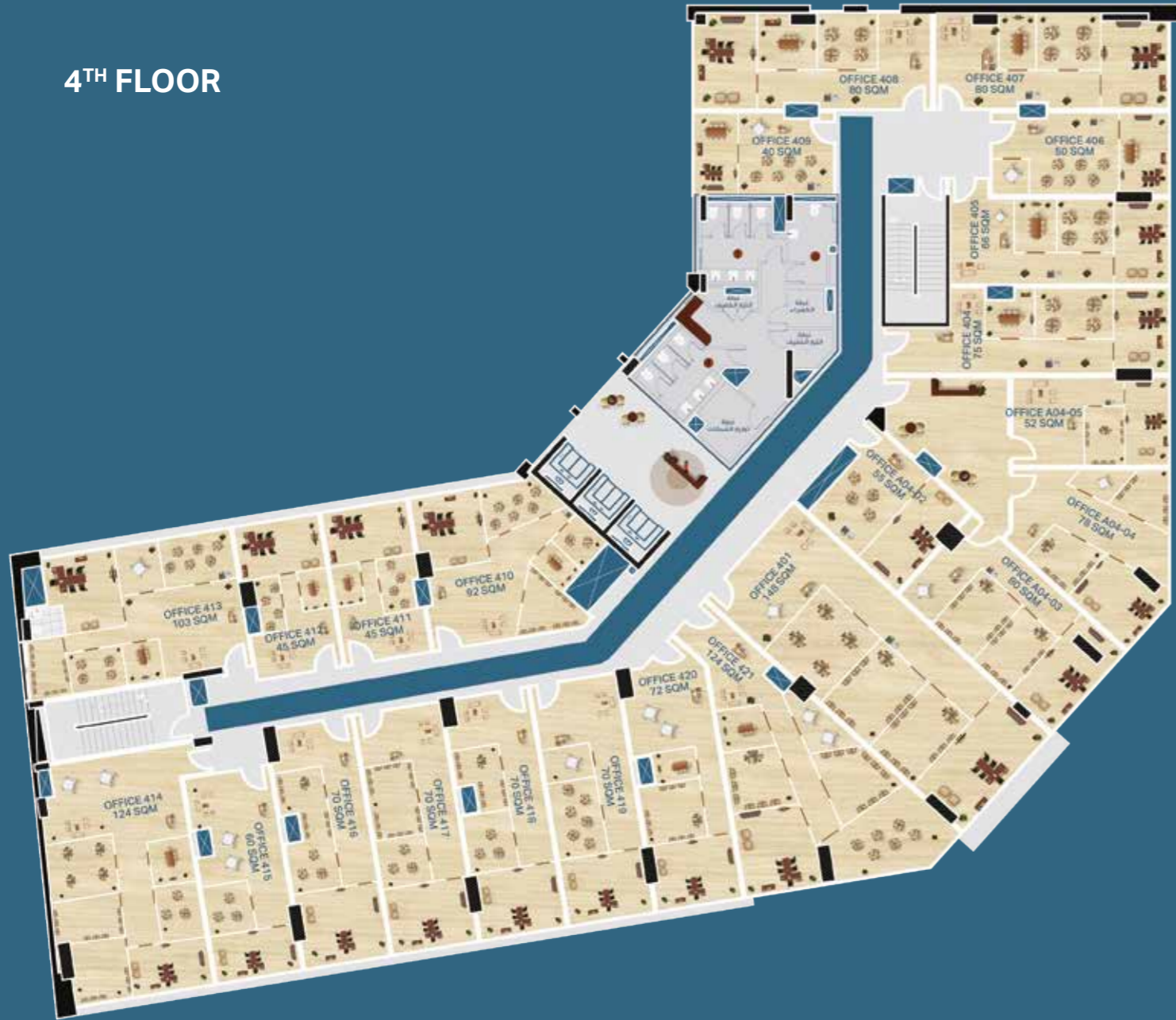


3RD FLOOR

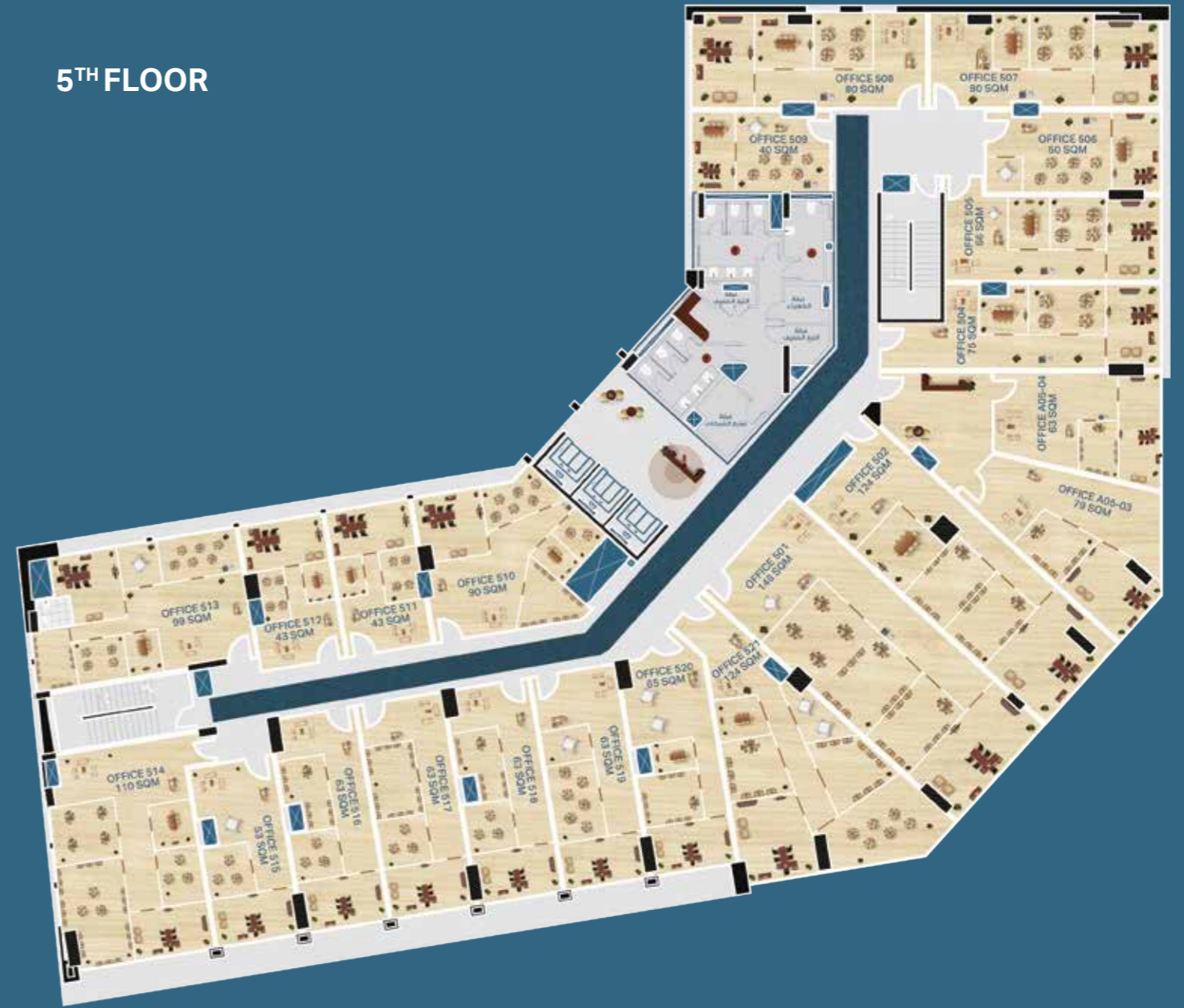




4TH FLOOR

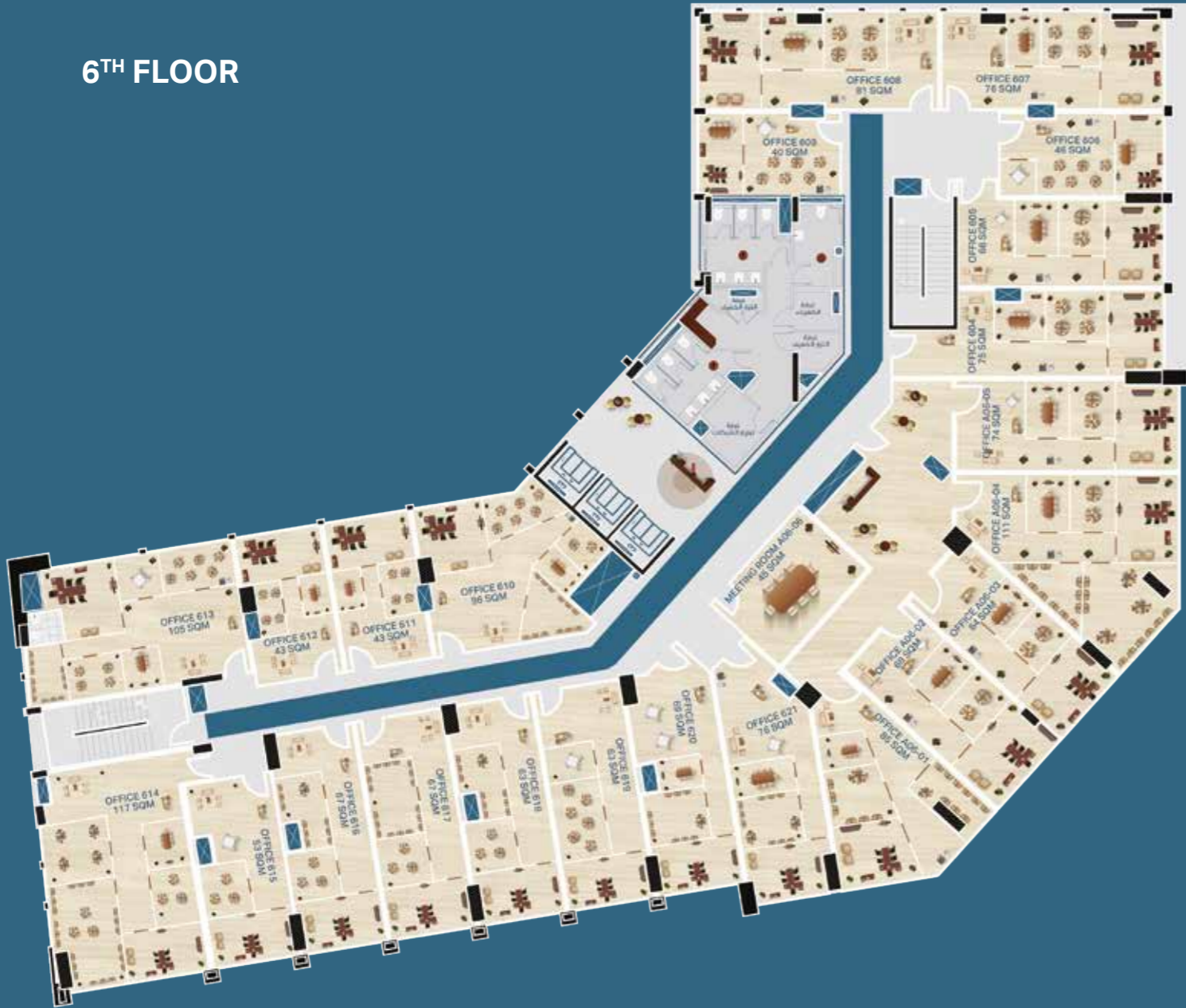


5TH FLOOR

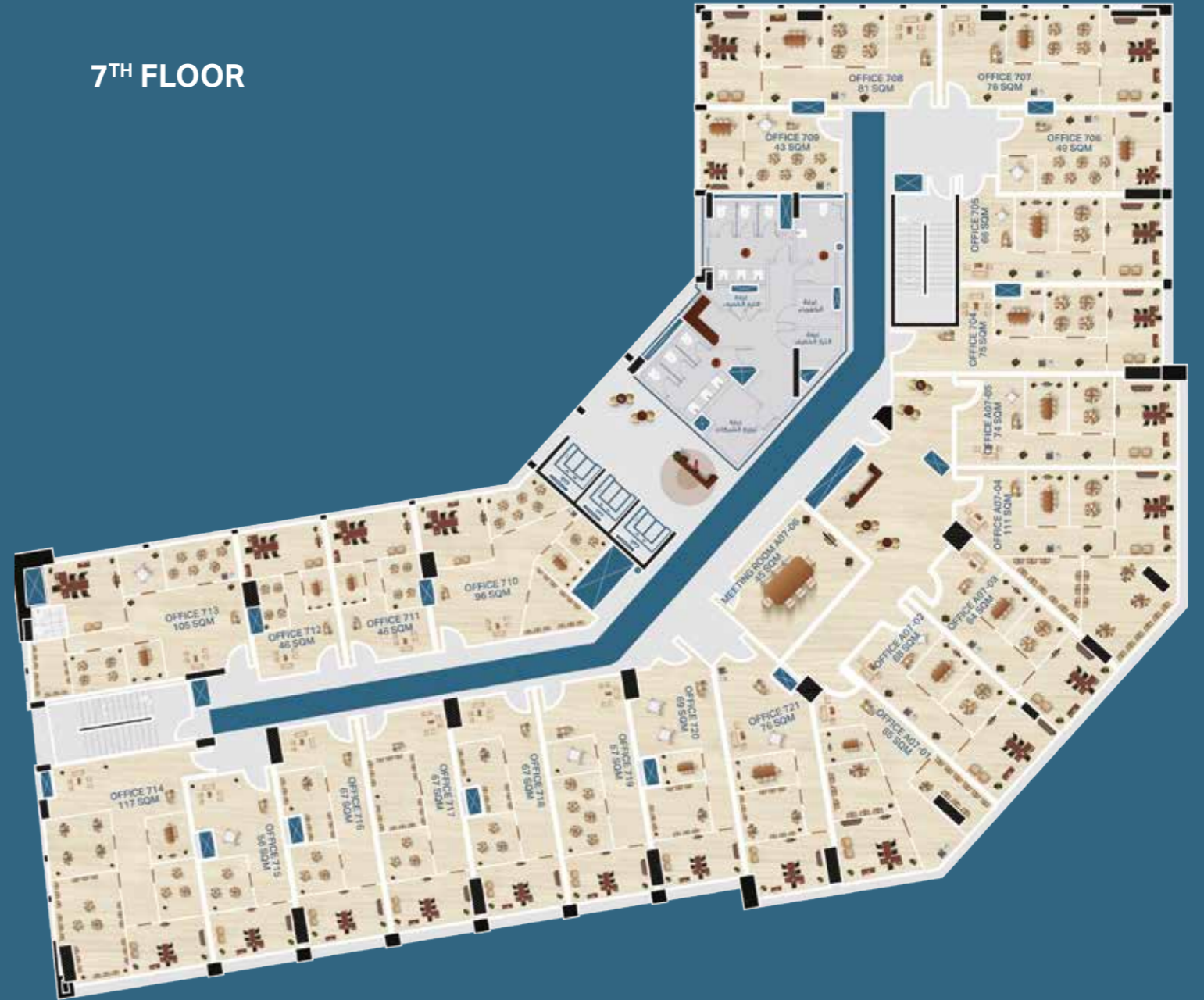




6TH FLOOR



7TH FLOOR



AMENITIES

UNDERGROUND PARKING

Structured for smooth circulation and convenience.



SHARED MEETING ROOMS

Maximises space usage and increases efficiency.



PANORAMIC VIEWS

Expands visions and increases privacy.



PASSENGER LIFTS

Fitted for capacity, endurance, and speed.



BREAK OUT AREAS

A place for leisure and quite enjoyment.



OUTDOOR AREAS

Connect with nature for healthier living and enhanced performance.



RECEPTION FOYER

Spacious, inviting and uplifting.



SOLAR PANELS

Clean and environmentally friendly energy.

SERVICES

BUILDING MANAGEMENT SYSTEM

A technology designed for better resources utilisation.



SURVEILLANCE CAMERAS

Ensuring your safety with around the clock security.



BACK UP GENERATORS

Always on for an uninterrupted workflow.



BACK UP WATER TANKS

Maintain the necessary needs at all times.



ELECTRIC CHARGING PARKING

Empowering green commuting and empowering.



HIGHSPEED INTERNET

Accessibility is key for consistent results.



FIREFIGHTING SYSTEM

Safety is mainstream and primary.



ATM UNITS

Adding a hint of comfort and facilitating your stay.

OUR PARTNERS IN SUCCESS

